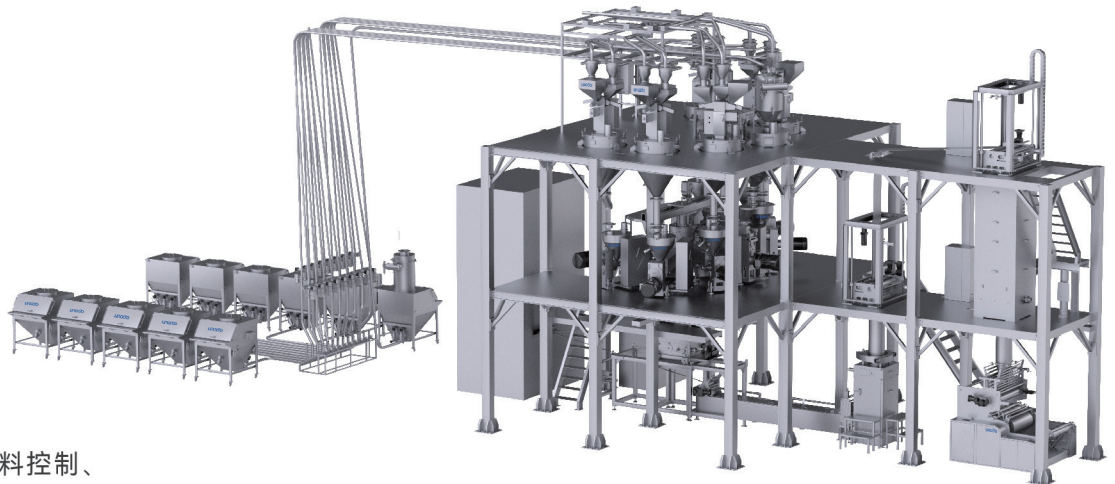


# SEVEN-LAYERED HIGH BARRIER CO-EXTRUSION FILM PRODUCTION LINE

## 七层高阻隔共挤膜生产线

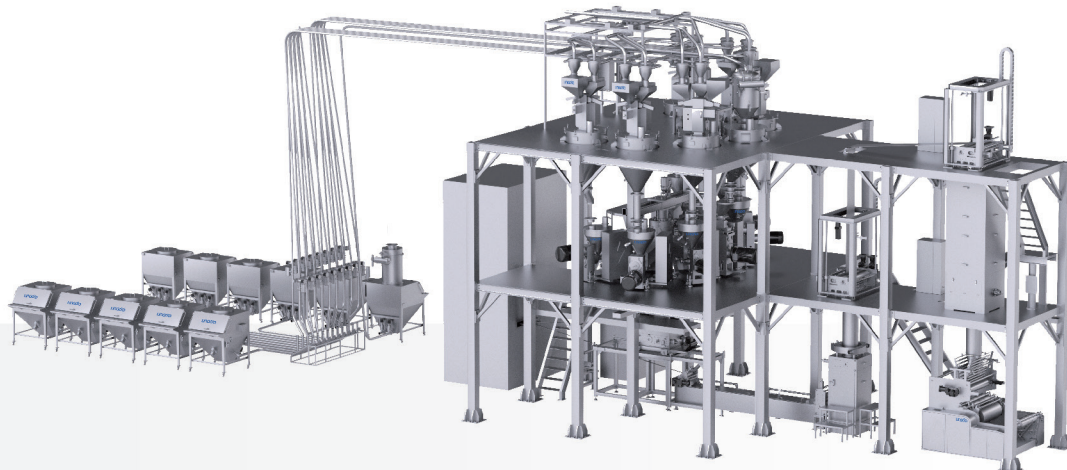


智能配料控制、  
智能化运行参数管理

Intelligent batching control and  
intelligent operation parameter management

# Overview

## 概述

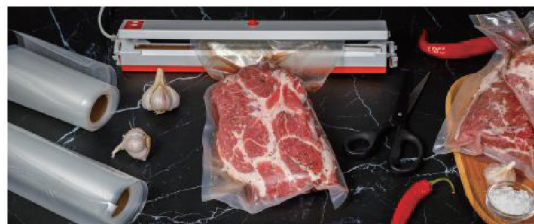


用于多层共挤薄膜的生产，通过自动配料系统将多种塑料粒子配比混合后输送到暂存仓，暂存仓中物料送入多台挤塑机并通过共挤模具挤出模胚，模胚经过加热、吹胀、冷却、热定型、冷却，最后收卷成成品卷膜。

Used in the production of multi-layer co-extruded films, various plastic pellets are mixed in proportion through an automatic batching system and then transported to a temporary storage bin. The materials in the temporary storage bin are sent to multiple extruders and extruded through a co-extrusion die to form a mold base. The mold base is heated, inflated, cooled, heat-set, cooled, and finally rolled into a finished roll film.

产线支持最多七层共挤膜的生产，可根据需要调整膜层数  
通过智能化控制系统，自动配料、自动开启相应层数挤塑设备和模具生产不同类型、不同层数的薄膜

The production line supports the production of up to seven layered of co-extruded film, and the number of film layers can be adjusted according to needs  
Through an intelligent control system, it automatically batches and automatically starts the corresponding number of layers of extrusion equipment and molds to produce films of different types and numbers of layers



# Features

## 产品特点

### 助力高效生产

#### Assisted efficient productio

全自动控制系统，自动记录存储工艺运行参数和生成图表，方便质量追溯和控制，同时绑定工艺运行参数和配方，根据配方自动调用运行参数

Fully automatic control system, automatically records and stores process operation parameters and generates charts, which is convenient for quality traceability and control. It also binds process operation parameters and recipes, and automatically calls operation parameters according to recipes

### 应用范围广

#### Wide range of applications

独有模具设计，适用于生产多种塑料共挤膜及PVDC高阻隔共挤膜

通过自动控制系统可自动启停不同膜层设备生产不同层数薄膜

自动配料系统适用于多种粉料、粒料的配比混合，适用于不同配方薄膜的生产

Unique mold design, suitable for the production of various plastic co-extrusion films and PVDC high barrier co-extrusion films

The automatic control system can automatically start and stop different film layer equipment to produce different layers of film

The automatic batching system is suitable for the mixing of various powders and granules and for the production of films with different formulations

### 保证产品质量

#### Ensure product quality

搭载先进的配料控制系统，支持物料数据管理、自定义的配方管理，实现智能化配方调用和订单管理。

通过二维码识别，迅速而准确地识别物料，精准投料，避免投料错误，同时提供实时的喂料量显示，确保整个配料流程的精准和高效

#### 精准控制

自动参数调整、梯度式温度场控制，加热及热定型控制温差小，膜质量及均匀性好

Equipped with advanced batching control system, it supports material data management, customized formula management, and realizes intelligent formula calling and order management

Through QR code recognition, it can quickly and accurately identify materials, accurately feed materials, avoid feeding errors, and provide real-time feeding amount display to ensure the accuracy and efficiency of the entire batching process

#### Precise control

Automatic parameter adjustment, gradient temperature field control, small temperature difference between heating and heat setting control, good film quality and uniformity



# Function

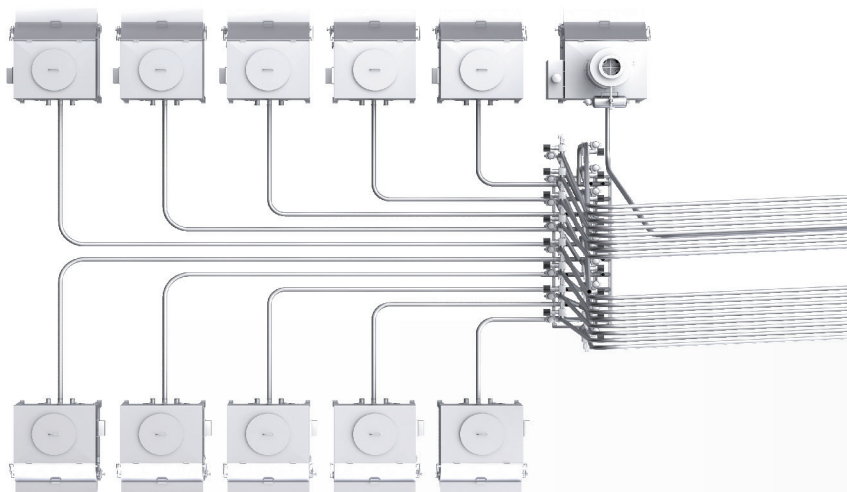
## 功能特点

**集中供料，空间隔离，确保产品卫生清洁**

**Centralized feeding, space isolation, ensure product hygiene and cleanliness**

采用独立空间集中供料，气力输送至生产车间，原料投料与产品生产隔离，避免外界污染，膜的卫生清洁有保证

Adopt independent space for centralized feeding, pneumatically conveying to the production workshop, separating raw material feeding from product production to avoid external contamination, and ensuring the hygiene and cleanliness of the film



**自动记录、适配运行参数，提高效率，避免操作错误**

**Automatically record, adapt operating parameters, improve efficiency and avoid operating errors**

根据配方定义工艺运行参数，系统自动记录运行数据、生成图表，订单排产自动调用配方和适配运行参数，快速切换生产，降低操作难度和避免操作错误

Define process operation parameters according to the recipe, the system automatically records operation data, generates charts, and automatically calls the recipe and adapts the operation parameters during order scheduling, quickly switching production, reducing operation difficulty and avoiding operation errors

# Technical parameter

## 技术参数

项 目 Items	参数/规格 Parameters/Specifications
最大收卷速度 Maximum rewinding speed	40m/min
共挤层数 Co-extrusion layers	Max 7
最大膜宽 Maximum film width	600mm
最大挤出产能 Maximum extrusion capacity	110kg/h
原料组份数 Number of raw material components	Max 28

注：本文件所述内容仅用于参考，实际产品参数请咨询灵鸽科技根据具体设计方案而定

Note: The contents of this document are for reference only. For actual product parameters, please consult Lingood Technology based on the specific design plan.



# EXPERT IN PRECISE MATERIAL HANDLING SYSTEMS

物料精准处理系统专家

电话: +86 0510-68228600

地址: 江苏省无锡市新吴区珠江路95-2号

网址: <https://www.lingood.com.cn/>

邮箱: [info@lingood.cn](mailto:info@lingood.cn)

TEL. +86 0510-68228600

ADD. No.95-2, Zhujiang Rd, Xinwu, Wuxi, Jiangsu

WEB. <https://www.lingoodtech.com/>

EMAIL. [info@lingood.cn](mailto:info@lingood.cn)

详细信息请扫码关注“灵鸽科技”官方微信公众号



官方视频号



官方微信号



官方抖音号